

SUPPLEMENT TO MANUFACTURES INSTALATION
FOLLOW ORIGIONAL MANUFACTURES INSTRUCTIONS
GAS LOGS

NOTE ! ADEQUATE FIREPLACE VENTILATION IS REQUIRED FOR SAFETY

GAS LOGS MUST BE INSTALLED BY PERSONNEL QUALIFIED FOR INSTALLING GAS APPLIANCES.

**READ INSTRUCTIONS FULLY BEFORE INSTALLING OR OPERATING.
INSTALLER LEAVE THESE INSTRUCTIONS WITH CONSUMER!**

Each log is hand finished to assure the most realistic, detailed log available. The gas log burner system is designed to burn like wood - with a yellow smoky flame. For this reason the gas log set must be burned only in a fully vented, non-combustible fireplace with the **damper completely open** and the chimney free of any obstructions or restrictions. The fireplace must be designed and approved to burn wood. The minimum permanent, free opening provided by the fireplace chimney must be 35 square inches.

**IT IS THE HOME OWNERS RESPONSIBILITY TO ASSURE
THEIR FIREPLACE HAS ADEQUATE DRAFT**

The realistic yellow flame produces carbon monoxide and soot. Under normal conditions these product safe exhausted up the chimney. If fumes or soot from the gas burning are evidenced in the room when the damper is fully open, it indicates that the fireplace draft is defective. Do not operate your gas log set until the fireplace draft is corrected.

ADEQUATE VENTILATION IS REQUIRED.

FOR YOUR SAFETY What to do if you smell gas:

- Do not touch any electrical switches.
- Do not try to light any appliance.
- Do not use the phone in your building.
- Immediately call your gas supplier from a neighbors phone.
- Follow your gas suppliers instructions.
- If you can not reach your gas supplier, call the fire department.

FLAMMABLE VAPORS MAY BE DRAWN BY AIR CURRENTS FROM OTHER AREAS OF YOUR HOUSE TO THIS APPLIANCE.

WARNING

If the information in this manual is not followed exactly, a fire or explosion may result causing property damage or loss of life

Installation and service must be performed by a qualified installer, service agency or the gas supplier.

Do not store or use gasoline or other flammable vapors and liquids in the vicinity of this or any other appliance.

GENERAL INFORMATION

DO NOT USE A NATURAL GAS SET FOR PROPANE OR A PROPANE SET FOR NATURAL GAS. WHEN USING PROPANE (LPG) GAS AN AUTOMATIC PILOT SYSTEM MUST BE INSTALLED.

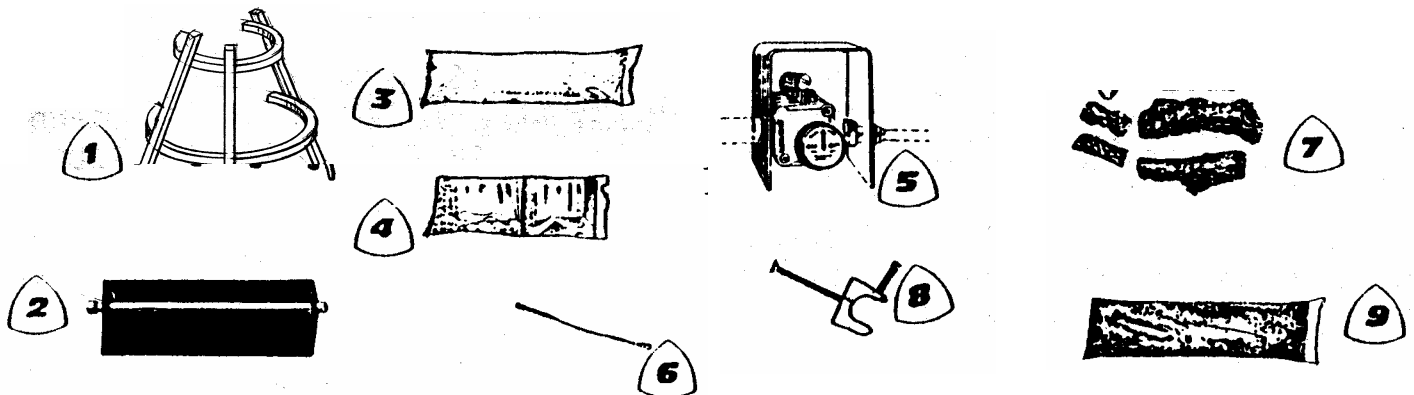
1. There are many different local codes for gas fire logs. The installation of this set must conform with local codes or, in the absence of local codes, with the current National Fuel Gas Code ANSI Z223.11984.
2. **This log set is designed for use with Natural Gas.**
3. When glass fireplace doors are used always operate gas log set with the doors fully open to allow for proper combustion air.
4. The appliance and its individual shut off valve must be disconnected from the gas supply piping system at test pressures in excess of 1/2 psi. The appliance must, be isolated from the gas supply piping system by closing its individual manual shut off valve during any pressure testing of gas supply system at test pressures equal to or less than 1/2 psi.
5. Minimum inlet supply pressure for Natural Gas is 7" water column. Maximum inlet supply pressure for Natural Gas is 10 1/2" water column.
6. After burning, the logs become fragile and should not be handled. Knocking or rubbing logs can cause concrete to crumble and is not covered under the warranty.
7. Use a soft, dry paintbrush for periodic dusting of the gas fire logs.
8. **Do not burn wood with this set.**
9. Have periodic cleaning of the venting system including examination by a qualified agency

NOTE: GAS LOGS MUST BE INSTALLED BY PERSONNEL QUALIFIED TO INSTALL GAS APPLIANCES

INSTALLING YOUR GAS LOGS

Remove all the parts from the shipping container. Your set includes the following parts...

- | | |
|-----------------------------------|--------|
| 1. Pedestal Grate | PG -16 |
| 2. Ember burner | EB -14 |
| 3. Silica Sand | SD -1 |
| 4. Fire Embers | EM -1 |
| 5. Safety Pilot Control(optional) | SPC |
| 6. Aluminum Connector | AC -18 |
| 7. Fire Logs | 4 |
| 8. Damper Stop (optional) | DS |
| 9. Volcanic Cinders | VC -1 |



DAMPER STOP

(optional)

Attach the damper stop clamp to the fireplace damper blade. Position the clamp to prevent full closure of the fireplace damper blade.

(See Figure 1)

If the damper stop provided does not fit, the installer shall install a permanent damper stop that will keep the damper open a minimum of 3".

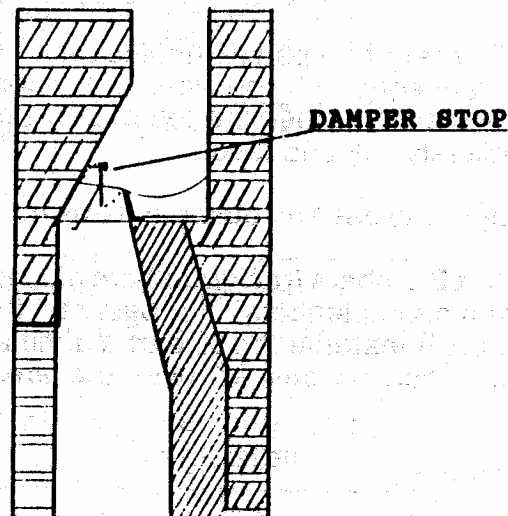


FIGURE 1

CAUTION

**THE DAMPER MUST BE FULLY OPEN
WHEN OPERATING THE GAS LOGS!**

EMBER BURNER POSITIONING

1. Turn gas off.
2. Remove old log lighter, ashes, and other material From the firebox.
3. Center the ember burner on the fireplace floor with the burner pipe complet results the ember burner should be directly under the flue opening with a mi the ember burner to the fireplace opening.
4. Place the grate over the ember burner so front legs of grate are just in front positioning is established, mark this burner and grate position on the floor of Remove grates and proceed with the gas connection.
(See Figure 2.)

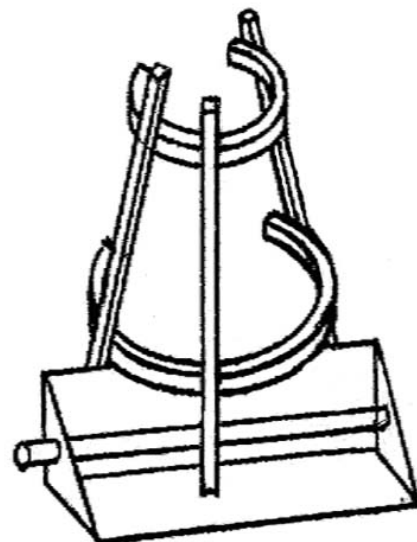


FIGURE 2

GAS CONNECTION

1. The gas supply line should be 1/2" Inside Diameter (ID) up to 30 feet and 3/4" for longer distances.
2. Tighten the black pipe cap on the end of the burner panpipe.
3. Use the aluminum connector to connect gas supply to the ember burner. When bending aluminum tubing use proper bending procedures to avoid kinking the tube. (If a safety pilot control is used follow instructions included for connecting gas to the pilot control.
4. Check all connections for leaks using a soapy water solution.
5. Damper must remain fully open during operation. Place a lighted match next to the burner pipe. Do not hold the match in your hand while lighting the gas. Turn the gas supply on slowly until the gas ignites. Check the flame for even distribution, flame height and pressure. After checking the flame turn off the fire. (To turn off the fire turn the gas valve off.) Do not close the damper until all the flames have died. Keep the glass doors fully open during all burning.

BURNER PAN MEDIA

1. Fill the burner pan with **silica sand**. Sand level should be stopped evenly with the sides of ember burner. Place 2/3 of The **Part A Embers** on top of the sand. Burner should be completely full and level.
2. Light the gas and observe flame for even distribution.
3. **Part B Embers** (rockwool) are placed over the sand to simulate glowing embers. For best results pinch off pieces Of the Part B materials the size of a dime and feather it out. Place as much as desired over the area the gas comes through.

(See Figure 3.)

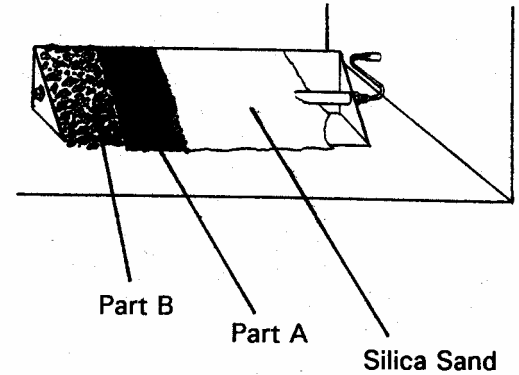


FIGURE 3

GRATE PLACEMENT

Place the **grate** over the ember burner using the reference marks made on fireplace floor earlier.

LOG PLACEMENT

1. The longest log is the first log to be set. Place it on end and lean (tilt) against the grate.
- The second log should be placed adjacent to the first log in the same fashion (on end).
- Follow in the same procedure for the remaining logs.

(See Figure 4.)

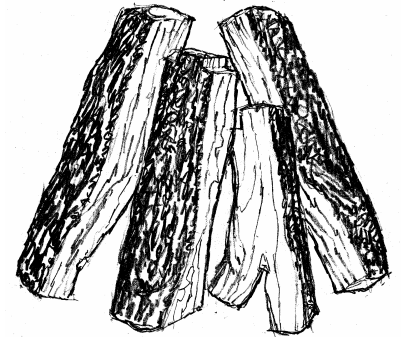


FIGURE 4

VOLCANIC CYNDERS

1. The black **volcanic cinders** are used to cover the fireplace floor, fittings and tubing around the burner system. Although not functional, the black cinders act as a picture frame to show off the glowing embers and yellow flame.
2. The remaining 1/3 **Part A Embers** can now be spread over the volcanic cinders to look like additional fallen ash under the logs.

FOR YOUR SAFETY

Do not use this appliance if any part has been under water. Immediately call a qualified service technician to inspect the appliance and to replace any part of the system or gas control which has been under water. Keep this appliance clear and free from combustible materials, gasoline, and other flammable vapors and liquids.

LIGHTING INSTRUCTIONS

CONCENTRIC PILOT CONTROL (CPC)

Your gas log set is equipped with a concentric pilot control (CPC).

The CPC combines safety and convenience for your added enjoyment. Please take a few minutes to study these instructions which will assist in a simplified installation and make you aware of some necessary precaution.

This gas pilot safety valve provides 100% shut off of both pilot and main burner gas supply in the event of pilot flame failure. This valve is equipped with a 3 position gas control knob to provide for pilot lighting. This control also allows pilot flame adjustment.

If the pilot flame goes out during normal operation, or if there is insufficient pilot flame to provide proper thermocouple output, the safety valve will close, stopping the flow of all gas. This valve is designed for use on all domestic heating gases up to 1/2'@ PSI.

Parts List

- | | |
|------------|------------------------------|
| 1. CPC-C | Control Valve and Dial |
| 2. CPC-EH | 3" Extension Handle |
| 3. Union | 3/8" O.D. (flare) X 3/8" MIP |
| 4. Coupler | 3/8" FIP X 3/8" MIP |

FOR YOUR SAFETY READ BEFORE LIGHTING

!WARNING! If you do not follow these instructions exactly, a fire or explosion may result causing property damage, personal injury or loss of life.

- A. This appliance has a pilot which must be lighted by hand. When lighting the pilot, follow these instructions exactly.
- B. BEFORE LIGHTING smell all around the appliance area for gas. Be sure to smell next to the floor because some gas is heavier than air and will settle on the floor.
- C. Use only your hand to push in or turn the gas control knob. Never use tools. If the knob will not push in or turn by hand, don't try to repair it, call a qualified service technician. Force or attempted repair may result in fire or explosion
- D. Do not use this appliance if any part has been under water immediately call a qualified service technician to inspect the appliance and to replace any part of the control system and any gas control which has been

FOR YOUR SAFETY

"WHAT TO DO IF YOU SMELL GAS"

- * Do not try to light any appliance.
- * Do not touch any electrical switch; do not use any phone in your building.
- * Immediately call your gas supplier from or a neighbors phone. Follow the gas suppliers instructions.
- * If you cannot reach your gas supplier call the fire department.

INSTALLATION

These gas valves should be installed according to the following instructions. Check for gas leaks with a soap solution after completing installation.

! CAUTION!

Never use flame to detect leaks.

~~MAIN PIPING CONNECTIONS~~

- 1) Be sure the main gas supply is shut off before starting the installation. It should be located so that the gas control knob is easily accessible.
 - 2) Direction of gas flow is indicated by the directional arrow on the outlet boss.
 - 3) You should use new pipe, which has been properly chamfered and reamed. If you use old pipe, be sure it is clean and free of rust, scale, burrs, chips and old pipe joint compound.
 - 4) Apply pipe joint compound (pipe dope) that is approved for all gases, only to the male threads of pipe joints. DO NOT apply compound to first two threads. Do not thread pipe too far.
- NOTE:** Applying pipe joint compound to pipe threads will prevent chips from passing onto internal valve parts, since the pipe joint compound will collect and retain chips that are formed as the pipe is threaded into the body.
- 5) If a vise or open-ended wrench is used to hold the control while installing piping, do not tighten excessively, as this may damage the control.

PILOT GAS CONNECTION

Install the fitting into the pilot gas tapping, turning until finger-tight. Insert clean, de-burred tubing all the way through the fitting. Holding the tubing securely, slowly tighten the fitting until a slight "give" is felt. Then tighten an additional 1 1/2 turns.

THERMOCOUPLE

The thermocouple connector should be clean for good electrical contact. Run the

thermocouple nut into the thermocouple connection as far as possible by hand. Then set the nut with 1/4 to 1/2 additional turn using a small wrench. Do not over-tighten.

PILOT LIGHTING PROCEDURE

- 1) Turn the gas control knob to the OFF position (it will be necessary to depress the knob slightly at the PILOT position). Allow five minutes for any gas in the combustion chamber to escape (LP gas, which is heavier than air, may require forced ventilation).
- 2) Turn the gas control knob to the PILOT position.
- 3) Push down on the gas control knob and light the pilot immediately. Hold the knob down for one full minute after lighting the pilot.
- 4) When the gas control knob is released, the pilot flame should continue to burn (if the pilot goes out, repeat the above steps).
- 5) Rotate the gas control knob from PILOT to ON position (full counter clockwise position) to supply full flow to main burner.

NOTE.- Not turning the gas control knob to the full ON position will reduce the flow and could result in poor ignition of main burner.

PILOT FLAME ADJUSTMENT

These controls are factory present and will not normally require additional adjustment of the pilot flame. In field adjustment of the pilot flame is required, turn the adjusting screw clockwise to reduce flame or counter clockwise to increase flame.



SAFETY PILOT CONTROL TROUBLE SHOOTING GUIDE

POSSIBLE CAUSES:

CORRECTIVE ACTIONS

1) Nature of Trouble: Pilot light won't light.

- | | |
|----------------------|--|
| 1 a) Gas supply off. | 1 a) Turn gas supply on. |
| 1 b) Air in line. | 1 b) Bleed gas through ember burner until all the air is out of the line bleeding through the pilot burner is not effective. |
| 1 c) Kink in line. | 1 c) Straighten the tubing and assure there are no crack in the tubing, or replace the tubing. |

2) Nature of Trouble: Pilot light won't stay lit after releasing knob.

- | | |
|---|---|
| 2a) Line from thermocouple is not making good contact with valve. | 2a) Tighten fitting that connects thermocouple line to the pilot control valve. |
| 2b) Pilot light flame is too strong and blows itself out. | 2b) Adjust the flame on the pilot burner in accordance with the pilot control instructions, or replace the pilot accordance with the pilot orifice with a larger orifice. |
| 2c) Pilot light flame is too low and enough electricity to | 2c) Adjust the flame on the pilot burner in not does transmit control instructions, or replace the pilot orifice with a pilot valve larger one. |
| 2d) Pilot light flame hits thermocouple | 2d) A cold junction is located on the lower 1/3 of the too thermocouple. close to cold junction. The pilot light flame must hit only the top 1/4 of the thermocouple or the cold junction will over heat and shut the system off. |
| 2e) Bad thermocouple.
all | 2e) Replace the thermocouple. This is unlikely on a new set as thermocouples have been factory tested before shipping. |

3) Nature of Trouble: Pilot light goes out after being lit.

- | | |
|---|---|
| 3a) Down drafts blowing out flame. | 3a) Correct chimney down draft problems. |
| 3b) Pilot light flame is too strong and blows itself out. | 3b) Adjust the flame on the pilot burner in accordance with the control instructions, or replace the pilot orifice with a larger orifice. |
| 3c) Pilot light flame is too low and pilot does not transmit enough electricity to pilot valve. | 3c) Adjust the flame on the pilot burner in accordance with the control instructions, or replace the pilot orifice with a larger one. |
| 3d) Pilot light flame hits thermocouple thermocouple or thermocouple or down. | 3d) A cold junction is located on the lower 1/3 of the
The pilot light flame must hit only the top 1/4 of the the cold junction will over heat and shut the system |

4) Nature of Trouble: Pilot light is noisy

pilot control instructions, or replace the pilot orifice with a larger orifice.

Nature of Trouble: Pilot light goes out when ember burner is turned on.

5a) Ember burner robs gas from line feeding the pilot light.

5a) Turn gas to ember burner on slower.

5a) Replace orifice adapter to burner with an orifice adapter with a smaller opening. NOTE: This will reduce the flame on logs.

amount of

6) Nature of Trouble: Delayed ignition of ember burner. (Gas should ignite in 4 seconds.)

6a) Gas is not getting to pilot light access quick enough.

6a) Clear passage way through sand to allow easier and quicker for gas from ember burner to pilot light.

6b) Incorrect locations or direction of pilot light.

6b) Assure pilot light directs flame over ember burner pan as well as properly hitting the thermocouple.

7) Nature of Trouble: System shuts down after burning 0-5 minutes. Cold junction on thermocouple has overheated.

7a) Immediate over heating of the on cold junction on the thermocouple.

7a) Assure thermocouple and pilot burner assembly are mounted the back side of the ember burner pan per safety pilot control instructions. Assure the assembly is free from contact with or other materials.

silica sand

7a) Check for leaks resulting in improper flame hitting the thermocouple.

8) Nature of Trouble: System shuts down after burning more than 5 minutes. Cold junction on thermocouple has overheated.

8a) Front log positioned over thermocouple reflecting flame and heat onto thermocouple.

8a) If front log is laying flat, position the log on its edge such that the flat side is facing the back of the fireplace.

8b) Thermocouple knocked out of position or interfered with by grate.

8b) Reassemble thermocouple in its assembly and move the grate so that it will not interfere with thermocouple.

8c) Heating of thermocouple copper tubing via flame, contact with ember burner pan, grate or other materials.

8c) Assure copper tubing is not touching any materials and is routed approximately one inch off the fireplace floor and has a minimum of 1/2" air space surrounding the tubing.

8d) The firebox retaining too much heat.

8d) If your fireplace has glass doors they must remain fully open. Make sure the damper is completely open during burning. Do not install safety pilot controls in stoves.

thermocouple.

9) Nature of Trouble: Pilot valve will not shut gas off.

9a) Pilot valve has overheated possibly components and/or seals.

9a) Shield from heat, or move valve out of firebox. Assure not gaskets or seals have been damaged and causing leaks. Turn off gas at a secondary shut off. Correct reason for overheating and replace valve.

CONCENTRIC PILOT CONTROL

PARTS GUIDE

1. CPC-C CONTROL VALVE AND DIAL
2. CPC-EH 3" EXTENSION HANDLE
3. 46-6-8 BRASS UNION
(INCLUDED IN GAS LOG KIT) 1/2" FIP X 3/8" FLARE W/ ORIFICE
4. FU 6-6 3/8" BRASS ADAPTER
5. 46-6-6 BRASS UNION
3/8" MIP X 3/8" FLARE
6. TPB-18 THERMOCOUPLE & PILOT BURNER
ASSEMBLY 18" LONG

FIG. A CPC-C

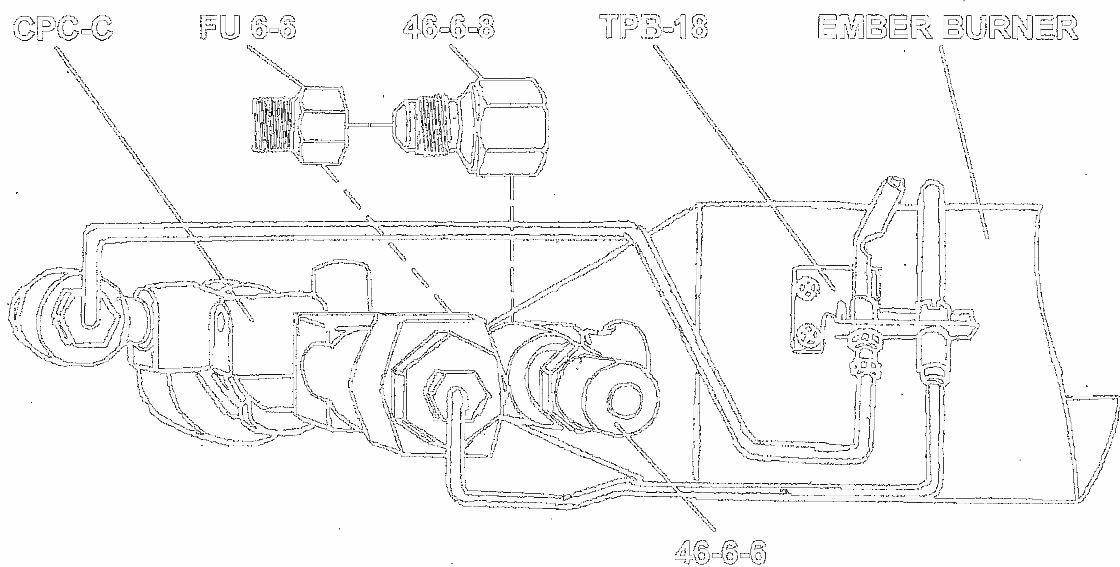
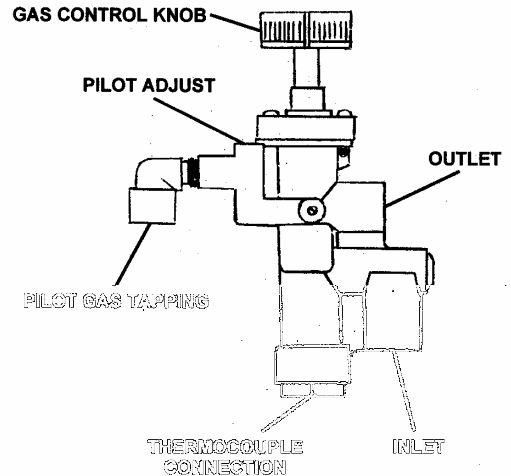


FIG. B BACK VIEW OF THE CONCENTRIC PILOT CONTROL INSTALLATION